

2 Rozel Court - Asking Price £160,000

Beck Row Bury St. Edmunds IP28 8AX

shires
residential



"Consistently providing outstanding service to our clients"

Asking Price £160,000

The Property

Nestled in the charming Rozel Court, Beck Row, Bury St. Edmunds, this delightful home offers a unique opportunity for comfortable living in a serene setting. With two well-proportioned bedrooms, this property is perfect for individuals or small families seeking a peaceful retreat.

The heart of the home is a spacious lounge diner, providing an inviting space for relaxation and entertaining. The modern kitchen is equipped with contemporary fittings, making meal preparation a pleasure. The layout is designed to maximise space and light, creating a warm and welcoming atmosphere throughout.

One of the standout features of this property is the wrap-around garden, which offers ample outdoor space for gardening, leisure activities, or simply enjoying the fresh air. This private garden is an ideal spot for alfresco dining or unwinding after a long day.

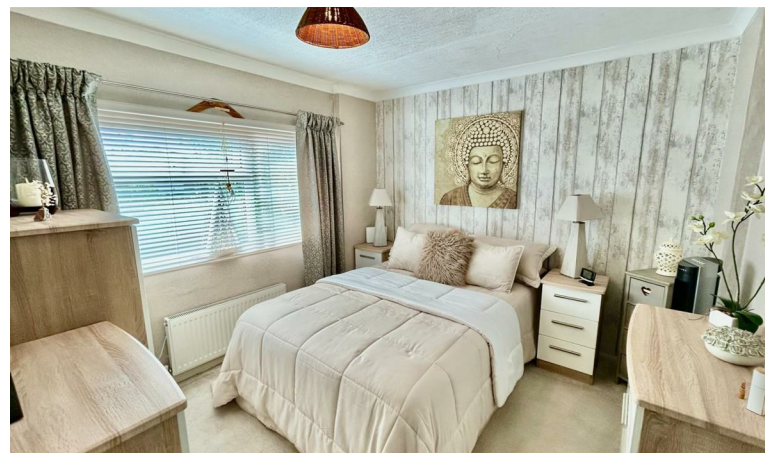
With two bathrooms one being En-suite, convenience is at the forefront, ensuring that both residents and guests have easy access to facilities. This home combines modern living with the charm of a park home lifestyle, making it a perfect choice for those looking to downsize or enjoy a more relaxed way of life.

Residents will benefit from a range of local amenities, including shops, parks, and excellent transport links. This property is not just a home; it is a lifestyle choice that offers comfort, convenience, and a sense of community. Don't miss the chance to make this lovely home your own.

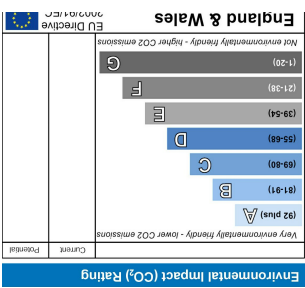
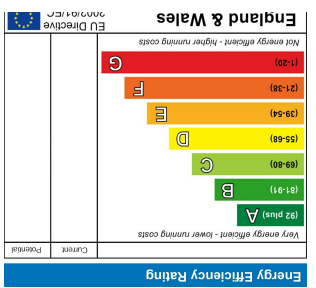
Features

- Two well-proportioned bedrooms, ideal for individuals or small families
- Spacious lounge diner
- Modern kitchen
- Wrap-around private garden
- Two bathrooms including a convenient en-suite
- Modern living with the charm of park home lifestyle
- Close to local amenities
- Excellent transport links nearby
- Set in a tranquil cul-de-sac
- Bright interiors





These sales particulars have been produced as a general guide only and we would draw to your attention that we have not carried out a detailed Survey of the property nor have we tested services, appliances or specific fittings. Whilst measurements and statements given within the details are provided in good faith, their accuracy should not be relied upon. If there are any points about which you may be uncertain or would like further clarification, we would suggest that you telephone this office and speak to our staff who will endeavour to assist you.



Values every rooming have been measured to the accuracy of the Royal Leicestershire Property Services. The meter, apertures have been read and no guarantee is given for any other items. The plan for furniture purposes only and should be used as such by any person or organisation.

TOTAL FLOOR AREA: 70.0 sq.m. (753 sq ft) approx.

Made with Mapbox ©2025



GROUND FLOOR 70.0 sq.m. (753 sq ft) approx.



Shires Residential
 4 New Street, Mildenhall, Suffolk, IP28 7EN
 T: 01638 712132
 E: mildenhall@shiresresidential.com
 www.shiresresidential.com